

Table 6.1 Bone Markings (1 of 2)

Table 6.1 Bone Markings

Name of Bone Marking	Description
PROJECTIONS THAT ARE SITES OF MUSCLE AND LIGAMENT ATTACHMENT	
Tuberosity (too''be-ros''i-te)	Large rounded projection; may be roughened
Crest	Narrow ridge of bone; usually prominent
Trochanter (tro-kan''ter)	Very large, blunt, irregularly shaped process (the only examples are on the femur)
Line	Narrow ridge of bone; less prominent than a crest
Tubercle (too''ber-kl)	Small rounded projection or process
Epicondyle (ep''i-kon''dīl)	Raised area on or above a condyle
Spine	Sharp, slender, often pointed projection
Process	Any bony prominence

Illustration

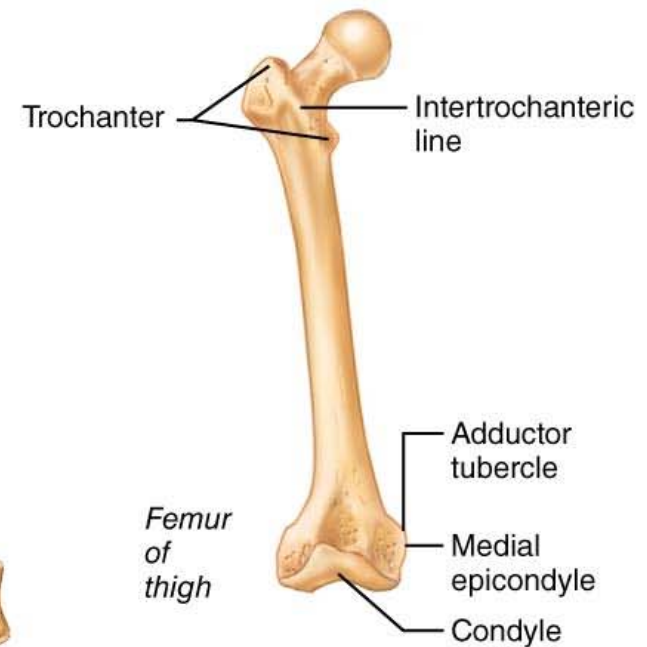
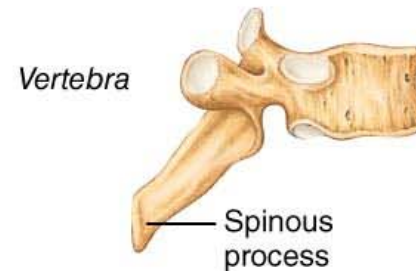
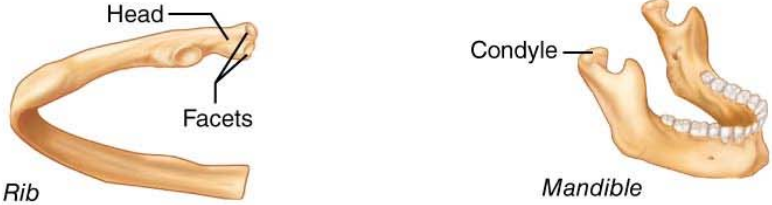
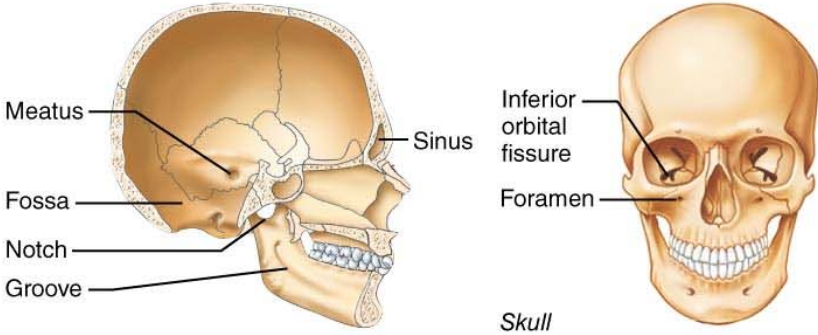


Table 6.1 Bone Markings (2 of 2)

Table 6.1 Bone Markings (continued)

Name of Bone Marking	Description	Illustration
SURFACES THAT FORM JOINTS		
Head	Bony expansion carried on a narrow neck	 <p>The illustration shows two anatomical examples. On the left, a rib is shown with a 'Head' at its proximal end and 'Facets' on its surface. On the right, a mandible is shown with a 'Condyle' at its proximal end.</p>
Facet	Smooth, nearly flat articular surface	
Condyle (kon'dīl)	Rounded articular projection, often articulates with a corresponding fossa	
DEPRESSIONS AND OPENINGS		
For Passage of Vessels and Nerves		
Foramen (fo-ra'men)	Round or oval opening through a bone	 <p>The illustration shows two views of a human skull. The left view is a lateral view with labels for 'Meatus', 'Fossa', 'Notch', and 'Groove'. The right view is a frontal view with labels for 'Inferior orbital fissure' and 'Foramen'. A 'Sinus' is also labeled in the lateral view.</p>
Groove	Furrow	
Fissure	Narrow, slitlike opening	
Notch	Indentation at the edge of a structure	
Others		
Fossa (fos'ah)	Shallow basinlike depression in a bone, often serving as an articular surface	
Meatus (me-a'tus)	Canal-like passageway	
Sinus	Cavity within a bone, filled with air and lined with mucous membrane	